

An Exact Design For Replacing Timber Ceiling Systems



The Rollformers Ceiling Systems were designed with lightness, strength, dimensional accuracy, durability and stability in mind.

The CB22 and CB35 Ceiling Battens have been shown to overcome the problems often associated with traditional timber framing.

As part of their design, drainage holes have been included, this allows any water accumulation to drain away meaning the Ceiling Battens are unaffected by a build-up of moisture.

The Rollformers Ceiling Battens are a lot quicker than traditional timber battens to install and could save a builder enough time to allow the building of up to two extra houses per year.

- Saves up to 50% on installation costs
- Saves up to 40% on material costs
- Unaffected by moisture and will not warp
- Available in any length
- Available from leading suppliers

One of the unique services that Rollformers offer in conjunction with the supply of the Rollformers CB35 Ceiling Batten System is their "Battens Cut To Length"

As they manufacture all of their product in-house at the Auckland manufacturing facility, Rollformers can run custom lengths of CB35 Battens to suit the client's needs.

This service has several benefits for the end-user.

- No wastage at installation due to each room being pre-measured and battens cut to suit.
- Decreased labour costs for the installation of the battens therefore no measuring or cutting on site.
- Battens packaged and labelled in the factory before shipment meaning easy identification on site.

All of the above benefits are offered at no additional cost to the P/M rate of the Rollformer CB35 Batten.

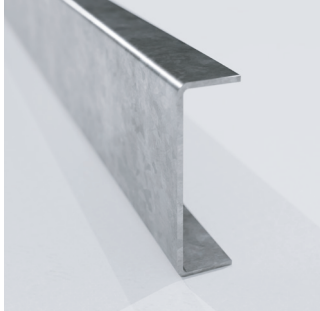
Rollformers 2000 Ltd was established in 1983 by Peter Taylor after 25 years' experience in the design and production of an extensive range of roll formed products.

The business began operations in a small suburban factory and rapidly developed into a major manufacturer and supplier of custom Rollformers products. Rollformers 2000 Ltd relocated and currently operates from a purpose-built 20,000m factory within an industrial estate in Auckland, New Zealand.

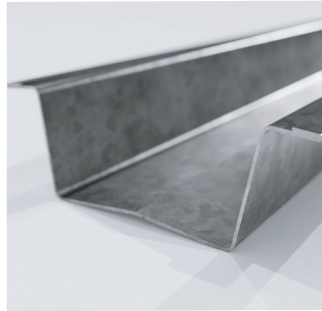
The Rollformers Group, where possible, utilises raw materials with a New Zealand content, taking advantage of the high quality and availability. They also produce a wide range of custom made roll formed products for both the New Zealand and overseas markets.

Ceiling Systems

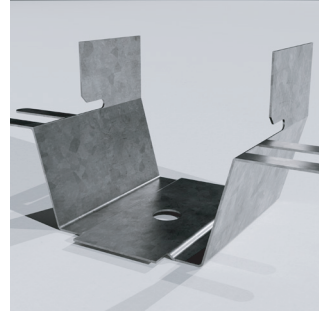
CB22



38mm Strongback Channel
1.15mm Galvanised Steel
3.6m Lengths



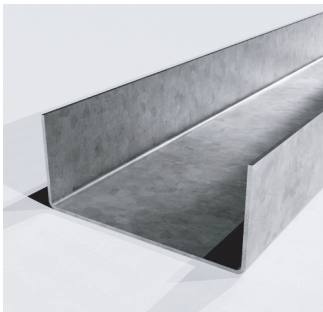
22mm CB22 Ceiling Batten
0.55mm Galvanised Steel
3.6, 4.8 & 6.0m Lengths



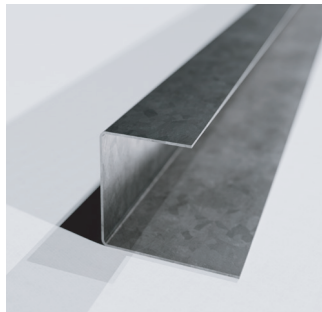
22mm Ceiling Batten Clip
0.75mm Galvanised Steel



20mm x 22mm Lipped Angle
0.55mm Galvanised Steel
3.6m Lengths



Suspension Channel
0.75mm Galvanised Steel
3.0 Lengths



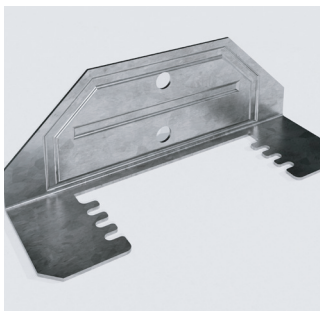
22mm Perimeter Channel
0.55mm Galvanised Steel
3.0m Lengths



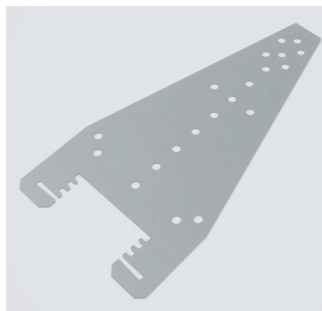
Suspension Strap
1.95mm Galvanised Steel
3.66m Lengths-For up to 400mm Drops



Hanging Clip
1.15mm Galvanised Steel



Hanging Wall Clip
1.15mm Galvanised Steel



CB22/CB35 Long Hanging Clip
1.00mm Galvanised Steel

PRODUCT DESCRIPTION

Rollformers CB22 Suspended Ceiling System provides a simple method of building both fire rated and non-fire rated ceilings. By using Rollformers steel channels and other primary rails complete with clips, ceiling membranes can be directly and positively fixed using self-drilling and tapping recessed headed screws. This results in a cost effective and dimensionally stable ceiling or wall plane, for any architectural solution.

FIRE RATINGS

All Rollformers steel components are non combustible (BS 476 Part 4 AS1530:1990). All ceiling components are manufactured with high quality galvanised steel (275g/m² Zinc) G250. N275 to NZS/AS1397: 2021.

COMPLIANCE WITH THE NEW ZEALAND BUILDING CODE

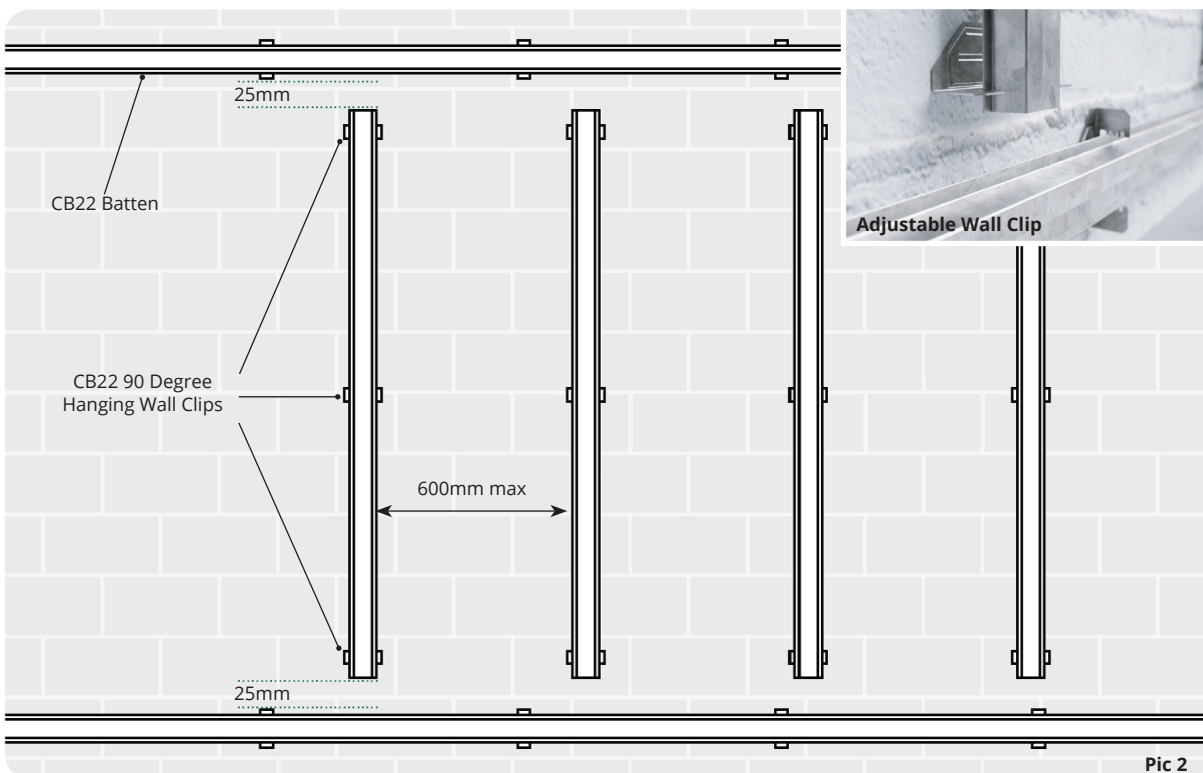
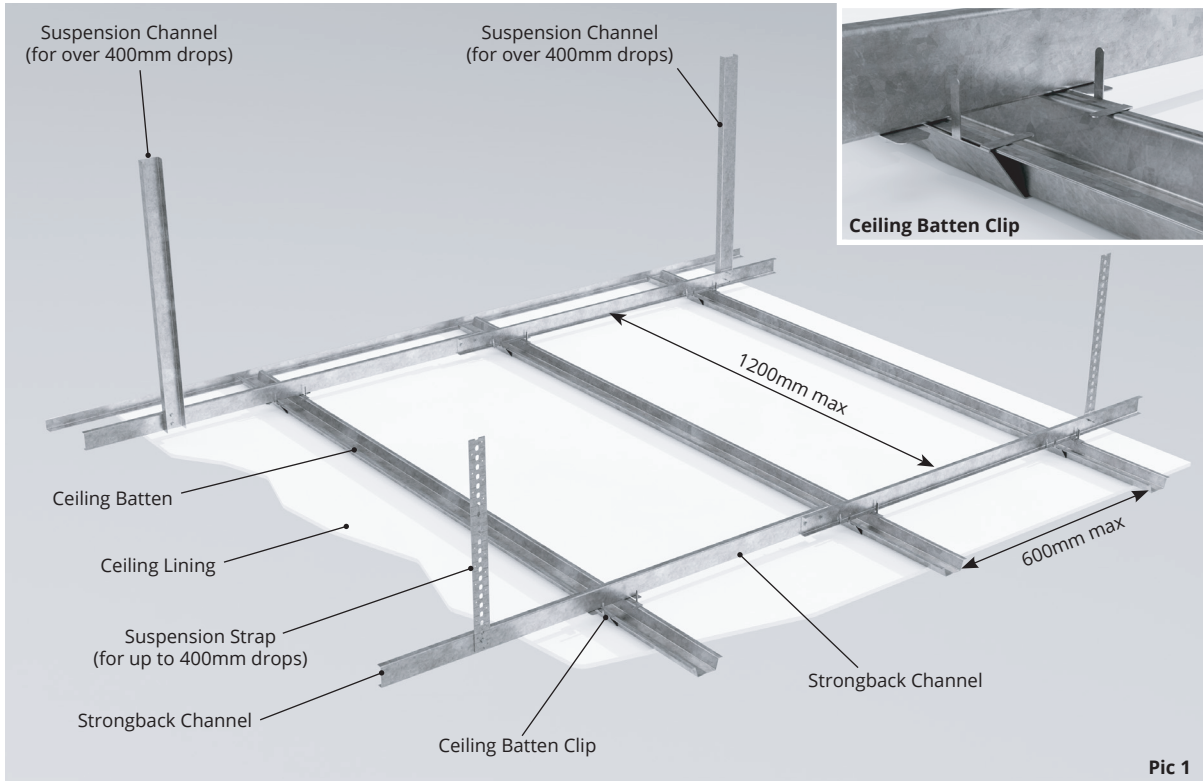
CB22 Suspended Ceiling Systems are to be installed in accordance with the details provided in this brochure, all requirements as laid down by New Zealand Standard 4203, 1992 Table 3.4.1. for non-habitable roof spaces in domestic dwellings will be met.

SPECIFICATION

At the spans in Pic.1, the ceiling battens will support all proprietary ceilings with the addition of a 0.5 Kpa line load, hence meeting NZS 4203 : 1992 Table 3.4.1. Category 1, Domestic 1.1. All deflections are within 1/500 of span i.e. 2.5mm for 1200mm span and 2mm for 900mm span. For specific design requirements involving extraprinary loading, e.g. fitting heavy lights, contact the Rollformers Technical Team. All testing has been carried out by Independant Testers.

Ceiling Systems

CB22

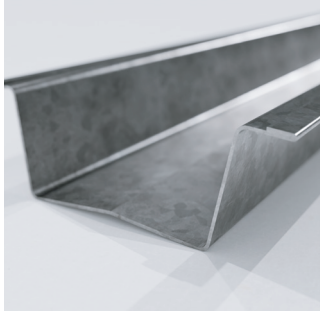


WALL STRAPPING

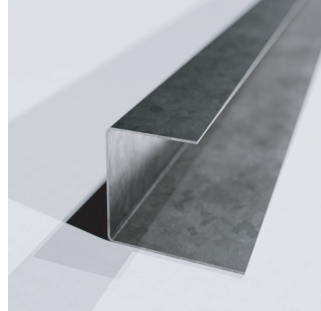
Rollformers CB22 Batten and Hanging Wall Clip is ideal for irregular walls, ready for fixing of building boards.

Ceiling Systems

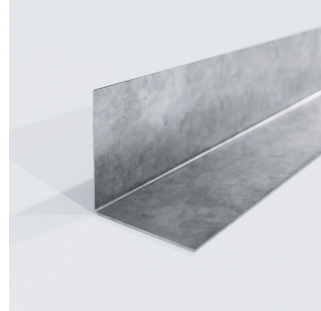
CB35



35mm CB35 Ceiling Batten
0.55mm Galvanised Steel
Cut to Size Lengths



35mm Perimeter Channel
0.55mm Galvanised Steel
3.0m Lengths

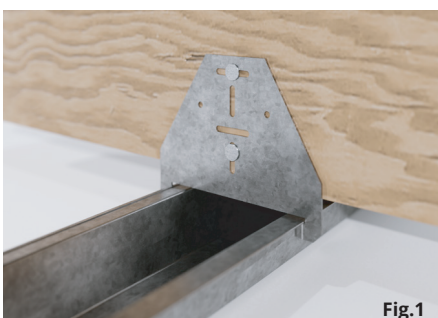
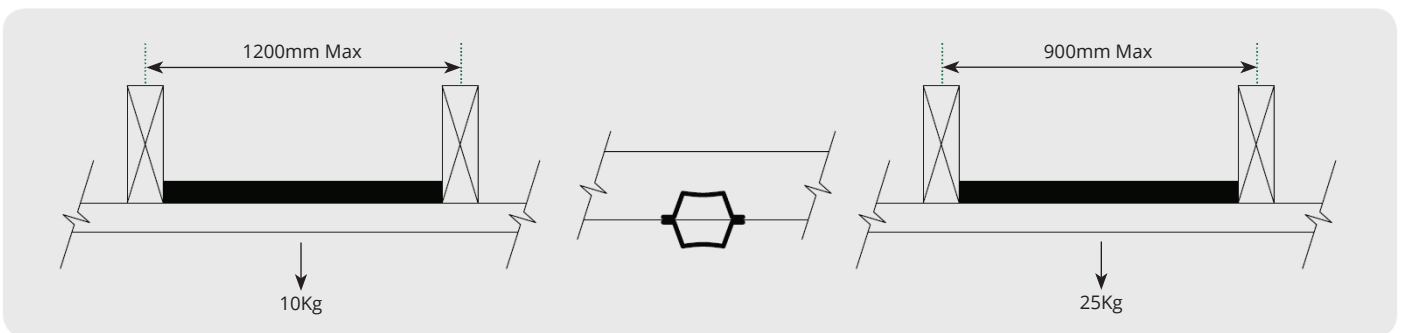
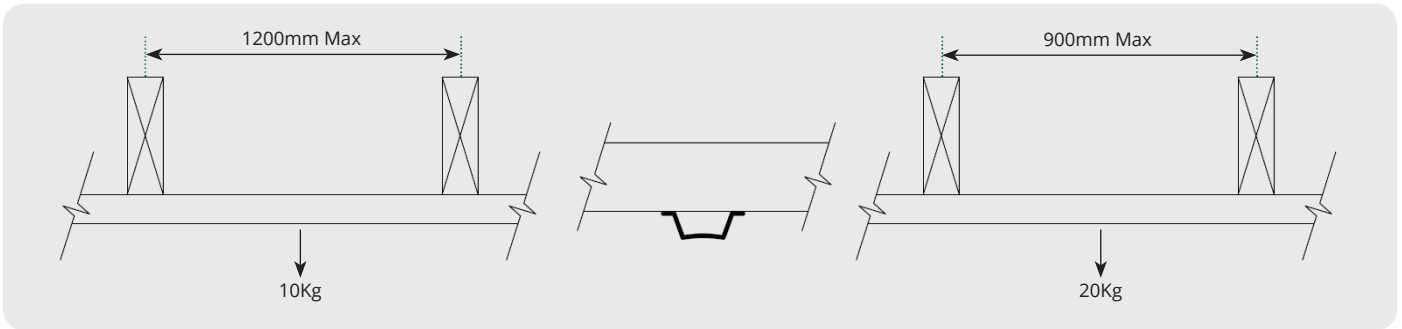


35mm x 35mm Trim Angle
0.55mm Galvanised Steel
3.0m Lengths



CB35 Hanging Clip
1.15mm Galvanised Steel
Alternatively you can use the new
CB22/CB35 Long Hanging Clip

POINT LOADS



Fixed Battens to Trusses or Joists



Fixing without Ribbon Plate



Notched Batten for fixing to Ribbon Plate



Ceiling Systems

CB35

PRODUCT DESCRIPTION

Rollformers CB35 Ceiling Batten have been designed to provide a sound framework to fix board for fibrous plaster installation. It's lightness, strength, dimensional accuracy, and stability overcome problems associated with timber framing. Unpredictable moisture content will not result in twisting, subsequent nail popping or joint movement.

BATTEN DIMENSIONS

Manufactured from 0.55mm high quality galvanised steel (275g/m² Zinc) G250. N275 to NZS/AS1397:2021.

Width overall.....97mm
 Depth overall.....35mm
 Fixed or bearing surface.....48mm
 Stock length.....Lengths cut to order

The CB35 Batten can be manufactured to suit most room requirements:

- Non Notched - Used in conjunction with perimeter channel or angle (refer to Fig. 2).
- Single Notched - Product is notched at one end. Designed to slip over Ribbon Plate for ease of installation. (refer to Fig. 3).
- Double Notched - Product is notched at both ends. Designed to slip over Ribbon Plate for ease of installation (refer to Fig. 3).
- No secondary products required.
- Drainage Holes

SPECIFICATIONS

At these spans the ceiling battens will support all proprietary ceilings with the addition of a 0.5Kpa line load, hence meeting NZS 4203 : 1992 Table 3.4.1 Category 1, Domestic 1.1. All deflections are within 1500 of span, i.e. 2.5mm for 1200mm span and 2mm for 900mm span. For specific design requirements involving extraordinary loading, e.g. fitting heavy lights, please contact the Rollformers 2000 Ltd.

COMPLIANCE WITH THE NEW ZEALAND BUILDING CODE

Refer to BPIR Document for full compliance data.

FIXING BATTENS TO TRUSSES OR JOISTS

Because of the unique cut-out at the end of each length of CB35 fixing is very simple. Where the end of the batten fits onto the ribbon plate simply slip the cut-out over the plate and fix back with 32 x 8g self-drilling wood screws or 40mm galvanised flathead nails. (refer to Fig.1)

CEILING LININGS

Rollformers CB35 Ceiling Battens are designed to support gypsum plaster and fibrous plaster ceilings with spans up to 1200mm. Fastening of the lining to the batten should be made with Gyplast neddlepoint screws or equivalent:

- 25 x 8g self-drilling wood screws
- 32 x 8g self-drilling wood screws

Adhesives may be used but only as recommended by the lining manufacturer.

NOTES ON PRODUCT HANDLING, STORAGE AND USE

- Rollformers Ceiling Battens should be free of moisture prior to installation and also prior to the fitting of the ceiling lining.
- If used in a roof situation, a thermal barrier should be used over the batten.
- Installation of battens should ideally not be started until after the building has been closed in.
- Battens are not designed to be walked on.

Prior to installation, battens should be inspected to ensure the surfaces have not been in contact with moisture or chemicals. If contact has occurred and surface corrosion is evident, the affected area should be treated by cleaning and spot priming to the appropriate manufacturer's recommendations. The cause of the contact must be identified and corrected to avoid further corrosion of the Ceiling Batten.

USAGE OUTSIDE GUIDELINES

Where the Rollformers range of Ceiling Battens are being used outside the limitations of handling, storage or installation, written approval should be obtained from the manufacturer.

BATTEN SPANS AND SPACINGS

Span	Maximum Spacing	Maximum Uniformly Distributed Load Kg/m ²
900	400	67
900	450	60
900	600	47
1200	400	41
1200	450	37
1200	600	27

Accessories

- Adjustable Long Clip for CB22 & CB35
- Screws
- Selection of odd and even sided angle
- Electrical strapping (45m rolls)

PLEASE NOTE

Rollformers 2000 LTD strongly recommends the use of electrical strapping to earth across all steel batten on installation. This would prevent any possibility of the battens going live on contact with a power source.

Ceiling Systems

CB22 & CB35

ACOUSTIC HANGING CLIPS



CB22 90 Degree Wall Hanging Clip



CB22 Hanging Clip



CB35 Hanging Clip



CB22/CB35 Long Hanging Clip

The full range of Rollformers hanging clips can be used in acoustic wall and ceiling assemblies, the clips come with rubber grommets that provide isolation between the wall or ceiling and the framing.

With the CB35 hanging clip and our new CB22/CB35 long hanging clip, architects, designers and installers have the choice of where they wish to place the acoustic grommets.

Installation is the exactly the same as our standard hanging clips.

TECHNICAL TIPS!

Fitting of Hanging Clips

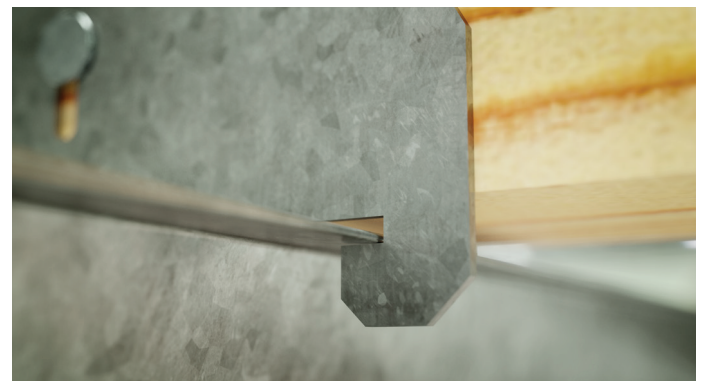
Installers need to be aware that there is a correct way and a wrong way of fitting the Ceiling Battens to the Hanging Clips. The image below shows the incorrect way of hanging the batten.



wrong way

The installer must have the retaining tabs bent back by at least 90 degrees, as shown below. This can easily be done while the Ceiling Batten is in place and by using a pair of pliers or mole grips.

Failure to do so can result in the Batten disconnecting from the Hanging Clip especially when subjected to overloading.



correct way

PRODUCT HANDLING, STORAGE & USE

- Battens should be stored in a dry, flat area to ensure that the product is not distorted, scratched or damaged.
- Should moisture damage occur, the product should be separated and dried. Failing to do this could impair the life of the galvanised coating.
- Battens should not be used in corrosive atmospheres or in contact with tanalised timber, copper products or chemically treated products (e.g. insulation).
- If used in a roof situation, a thermal barrier should be used over the batten.
- Installation of battens should not be started until after the building has been closed in.
- Special attention should be paid to all electrical wiring regulations.
- Battens are not designed to be walked on.
- All roof spacings that are accessible should be provided with walking planks. Refer to NZS 4203: 1992 Table 3.4.1 Category 1, Domestic 1.1.



Ceiling Systems

Batten Order Sheet

Use the form below to help ensure that you order the correct amount of Ceiling Batten. You can hand this into your local building merchant or to your Rollformers sales representative, alternatively you can email or fax it to Rollformers directly.

Customer:	Phone/Mobile:
Email:	Delivery Address:
Customer Order #:	Date Required:
Date of Order:	

CB22 Ceiling Batten System	No. Lengths required or total linear metres
CB22 Ceiling Batten	
Strongback Channel	
Perimeter Channel	
Lipped Angle	
Suspension Channel	

CB22 Ceiling Batten System	Total No. Required
CB22 Ceiling Clip	
CB22 Hanging Clip	
CB22 90 Degree Wall Hanging Clip	
CB22/CB35 Long Hanging Clip	
Suspension Strap	

CB35 Ceiling Batten System	No. Lengths required or total linear metres for notched stipulate single end or double end
CB35 Ceiling Batten	
CB35 Ceiling Batten Notched	
Perimeter Channel	
Trim Angle	

CB35 Ceiling Batten System	Total No. Required
CB35 Hanging Clips	
CB22/CB35 Long Hanging Clip	
Electrical Strapping (rolls)	

Ceiling Batten Accessories	No. Lengths required or total linear metres
20mm x 40mm Angle	
40mm x 40mm Angle	
50mm x 50mm Angle	

	Total No. Required
Box screws	



rollformers
2000 LTD

ROLLFORMERS 2000 LTD

**55 Allens Rd, East Tamaki, Auckland, New Zealand rollformers.co.nz
Email: enquiries@rollformers.co.nz | +64 9 274 4898**

Copyright Rollformers 2000 Ltd ©2000-2020 All Rights Reserved. The Rollformers Group reserve the right to change all content contained herein and is subject to change without notice. The Rollformers Group is made up of Rollformers 2000 Ltd, Multistrut, Multirack & Galaxy Storage. All names, logos, images & electronic documentation belong to their respective owners

Rev4 March 2022