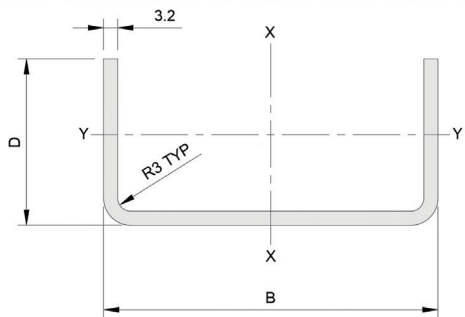
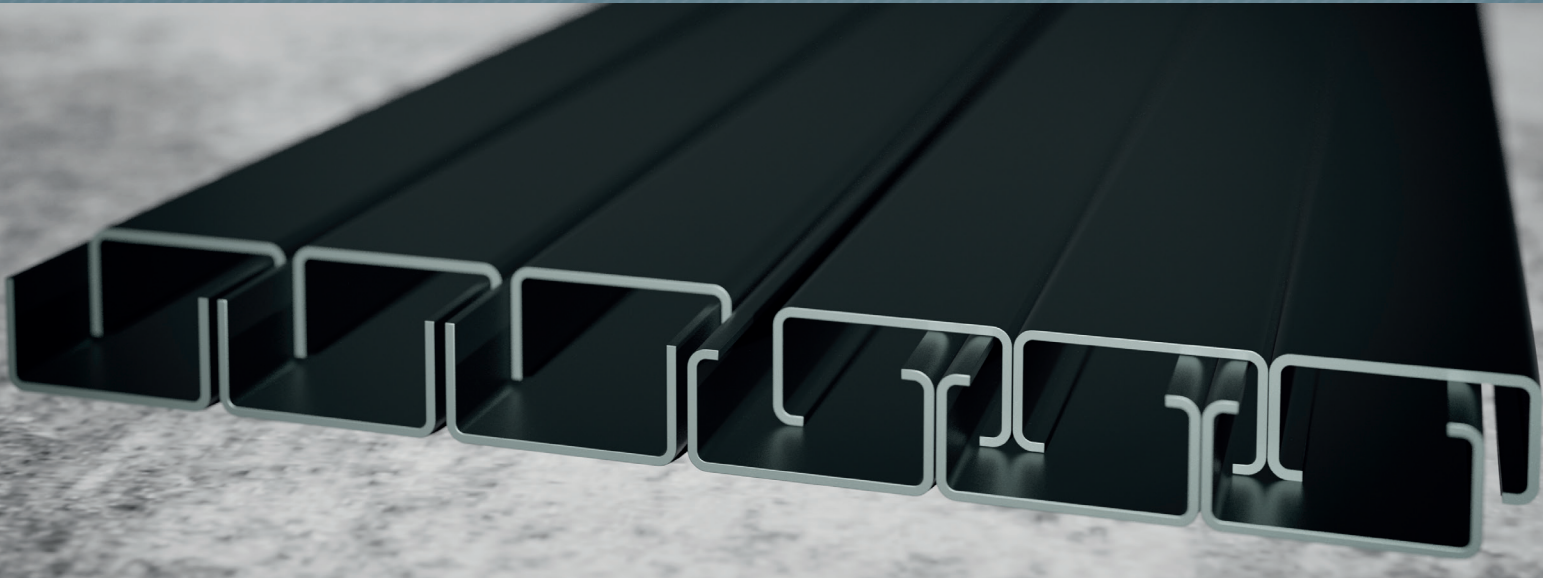


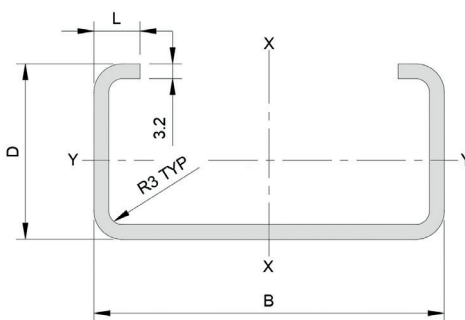
Standard Roll Formed Sections

Channels: Plain & Lipped



Plain Channel

SIZE B X D (MM)	AREA MM ²	MASS KGS/M	2ND MOVEMENT OF AREA IX - IY (10 ³ X MM ⁴)	SECTION MODULUS ZX - ZY (10 ³ X MM ⁴)	PACKET SIZE
51 x 25	295	2.31	108.0 - 17.6	4.20 - 0.99	24
76 x 38	451	3.61	392.0 - 63.0	10.30 - 2.34	24
102 x 51	620	4.90	995.0 - 158.0	19.50 - 4.30	24



Lipped Channel

SIZE B X D X L (MM)	AREA MM ²	MASS KGS/M	2ND MOVEMENT OF AREA IX - IY (10 ³ X MM ⁴)	SECTION MODULUS ZX - ZY (10 ³ X MM ⁴)	PACKET SIZE
51 x 25 x 10	322	2.53	115.0 - 23.4	4.50 - 1.44	10
76 x 38 x 10	481	3.77	425.0 - 79.0	10.90 - 3.10	10
102 x 51 x 12	673	5.28	1070.0 - 212.0	20.80 - 6.16	10

- Rollformers cold formed steel channels are rolled from hot rolled steel strips.
- Ideal for construction, general fabrication & engineering.
- Production methods used provide uniform straightness & dimensional accuracy.
- Channels supplied as standard in 6 metre lengths, pre-galvanised channel made to order.
- Practical & economical.
- Packs of cold formed channel sections must be kept dry in transit & stored clear of the ground under cover.

55 Allens Rd, East Tamaki, Auckland, New Zealand rollformers.co.nz
 Email: enquiries@rollformers.co.nz | Ph: 0800 743 3748 | +64 9 274 4898